

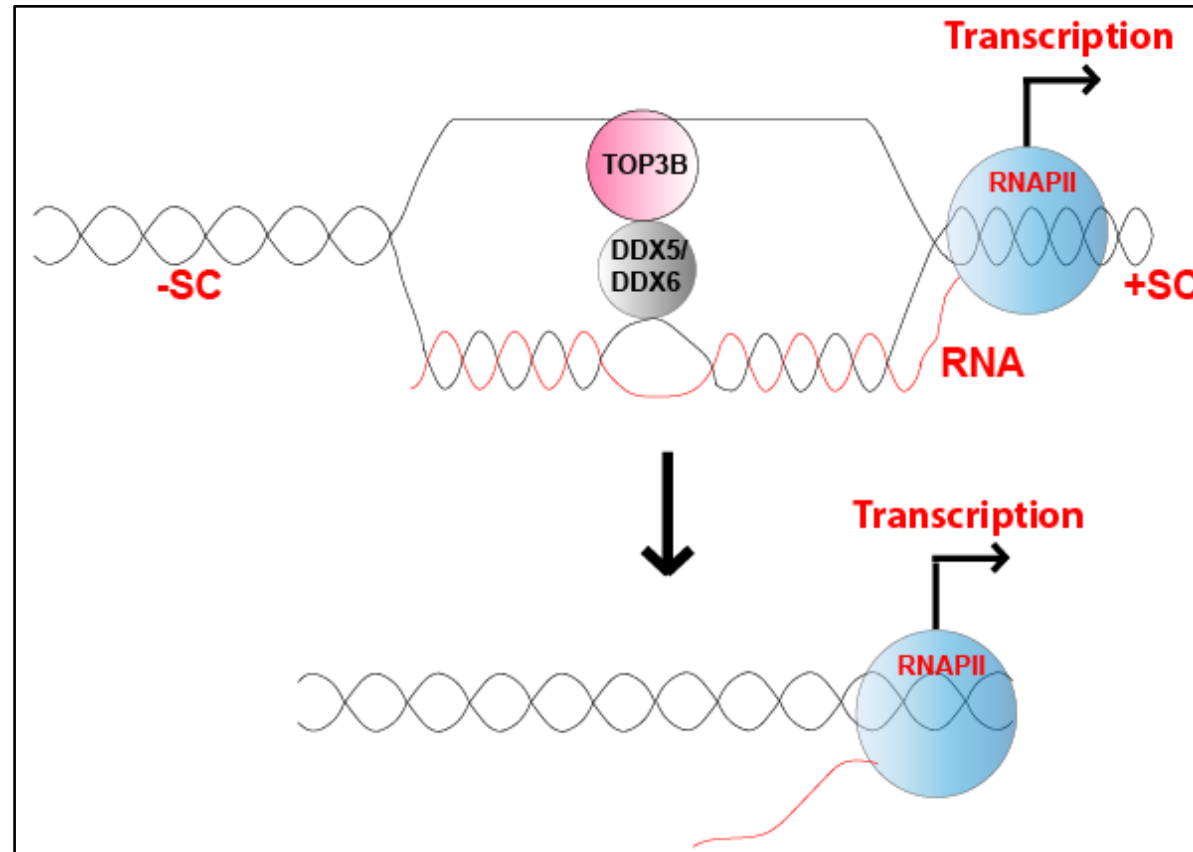
Human DNA/ RNA Topoisomerase TOP3-beta (TOP3B) is coordinated with the DEAD-box Helicases DDX5 and DDX6 to resolve R-Loops



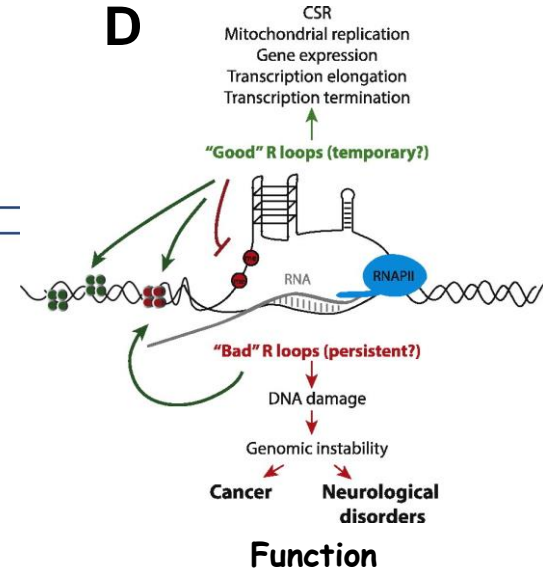
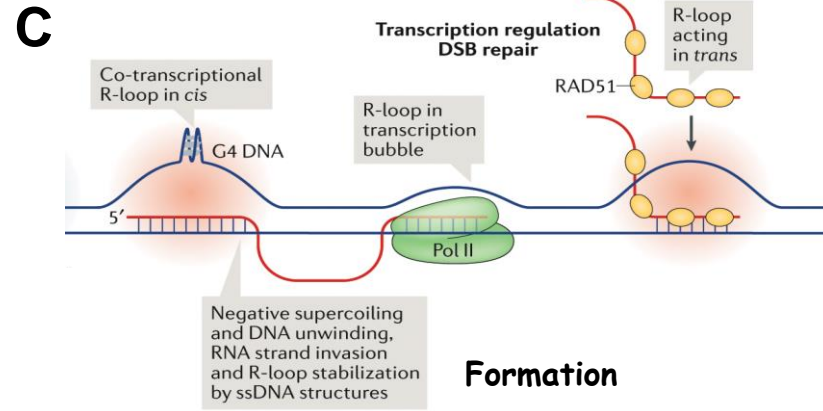
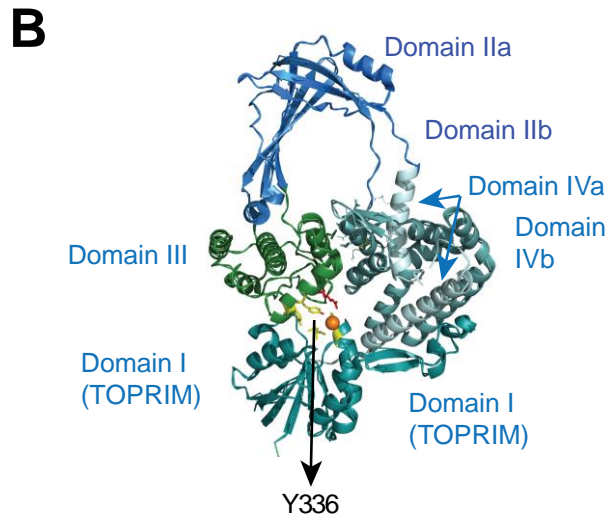
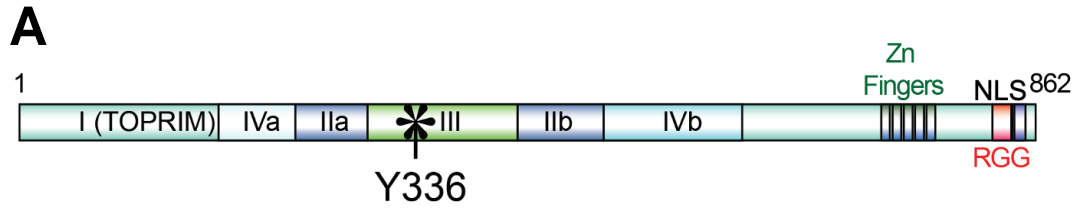
Sourav Saha^{a*} and Yves Pommier^{a*}

^a Laboratory of Molecular Pharmacology, Developmental Therapeutics Branch, Center for Cancer Research, NCI, NIH, Bethesda, MD 20892

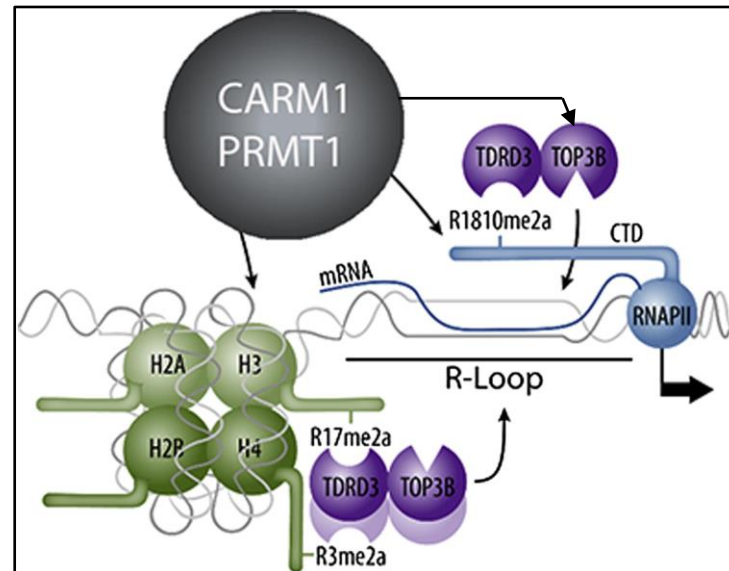
- sourav.saha@nih.gov and pommier@nih.gov



DNA/ RNA Topoisomerase 3-beta (TOP3B)



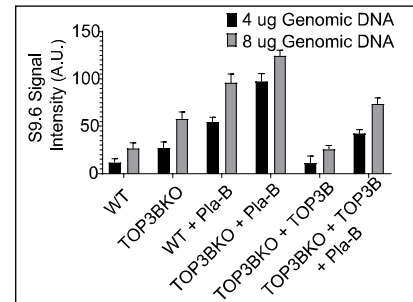
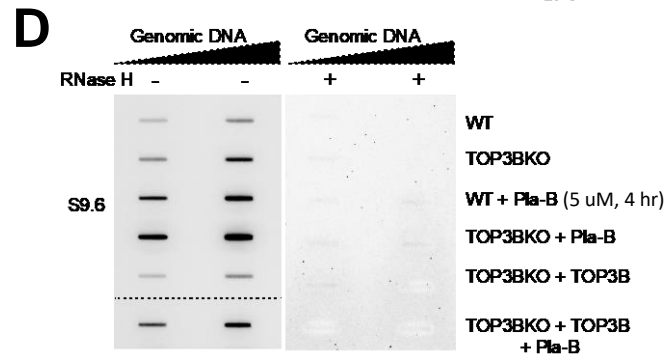
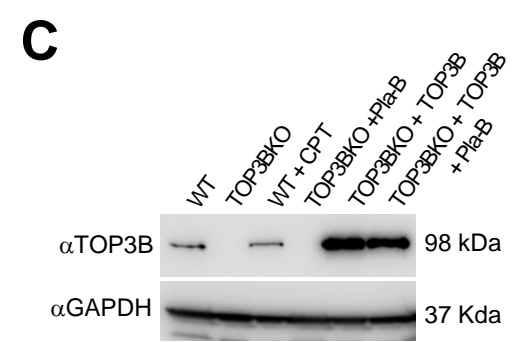
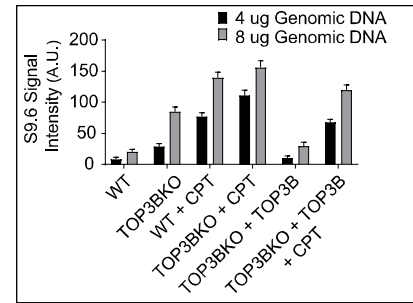
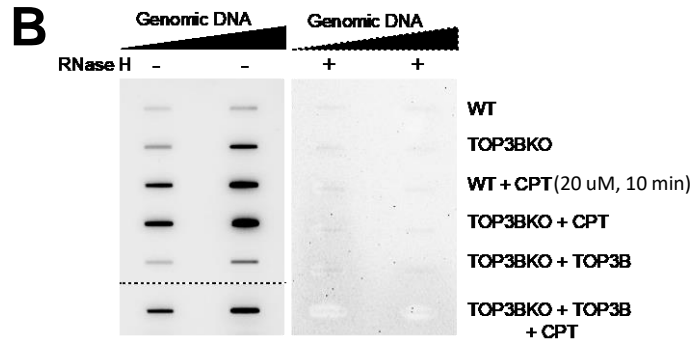
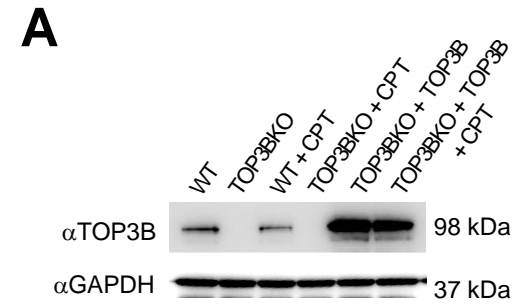
TOP3B and R-loop Connection



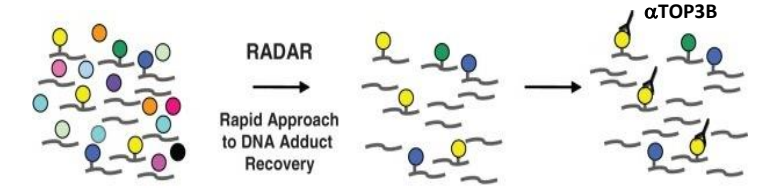
- (B) Goto-Ito et. al., Sci. Rep. 2017;
 (C) Niehrs and Luke, Nature Reviews Molecular Cell Biology, 2020;
 (D) Richard and Manley, J Mol Biol., 2017;
 (E) Yang et. Al., Mol. Cell, 2014

R-loop detection by DOT-BLOT with s9.6 Ab

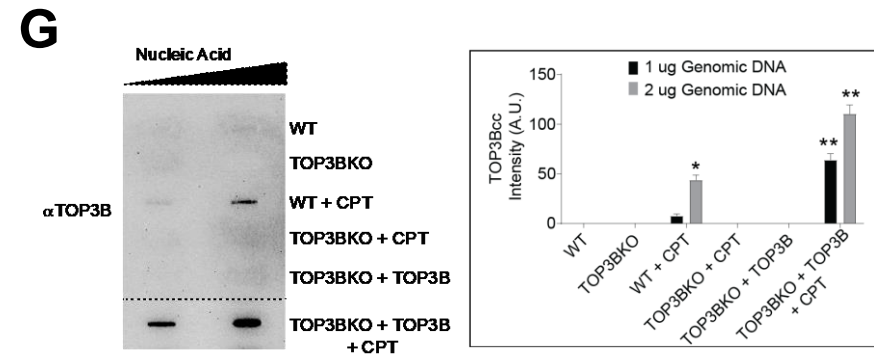
TOP3Bcc detection by RADAR Assay



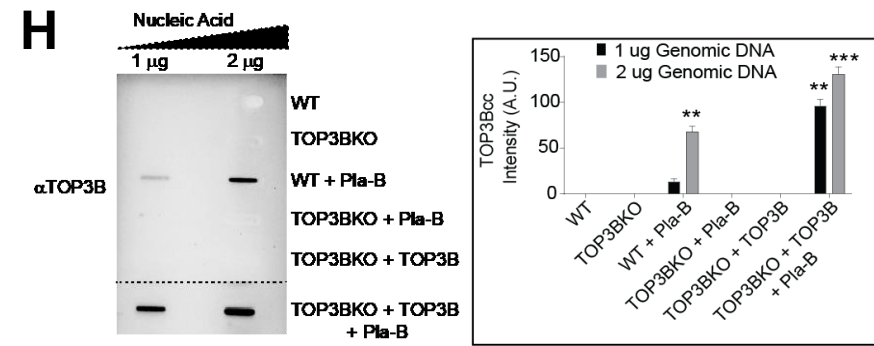
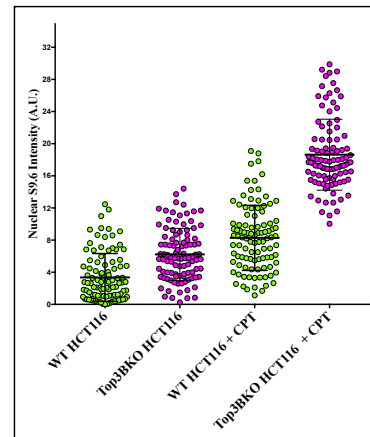
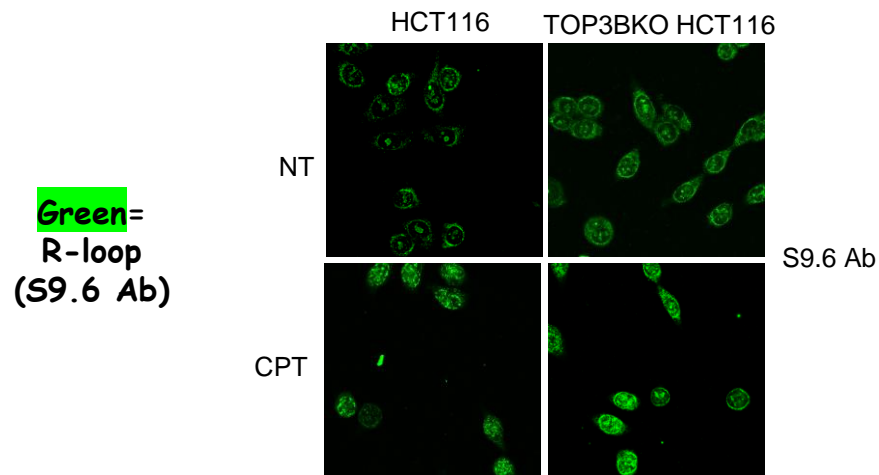
F RADAR assay: (rapid approach to DNA/RNA adduct recovery): purification of DNA/RNA by chaotropic agents such as guanidinium isothiocyanate. (Kiianitsa and Maizels, 2013)



Kiianitsa and Maizels, Nucl. Acids Res., 2013



E R-loop Confocal Microscopy



TOP3B-helicase coupling resolves R-loops??

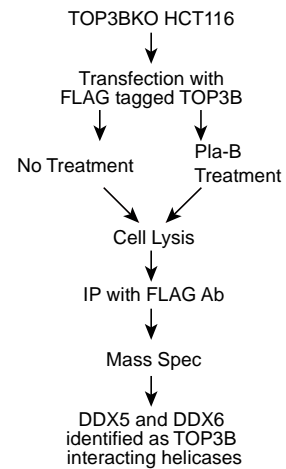
A How does TOP3B activity on single stranded DNA in R-loops promote R-loop resolution?

TOP3B can only cleave single strand DNA (ssDNA) in R-loop structures

A helicase coupled with TOP3B can unwind DNA-RNA hybrid of R-loop to generate ssDNA

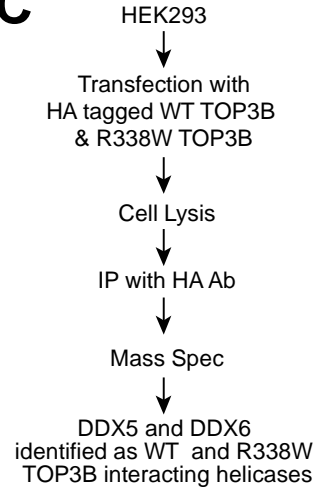
TOP3B-mediated strand passage through ssDNA Resolves R-loop

B IP-Mass Spec Experiments



Helicases	# PSM TOP3BKO + TOP3B	# PSM TOP3BKO + TOP3B+ Pla-B	Remark
DDX5	58	57	Interacts before and after R-loop induction
DDX6	6	9	Interacts before and after R-loop induction

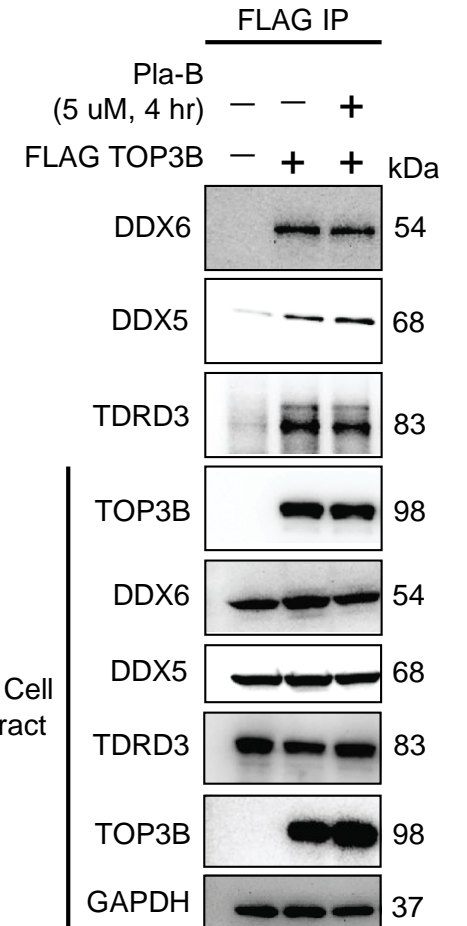
C



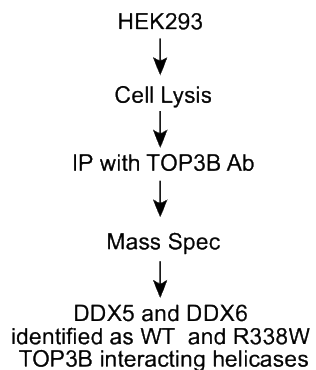
Helicases	# PSM Empty Vector	# PSM WT TOP3B	# PSM R338W TOP3B
DDX5	6	62	48
DDX6	0	7	6

E IP-Western blotting Experiments

E



D



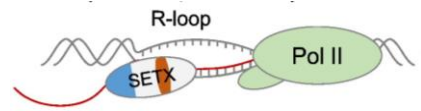
Helicases	# PSM HCT116	# PSM TOP3BKO
TOP3B	95	0
DDX5	143	47

DDX5 and DDX6 are candidate helicases working with TOP3B.....

DDX5/ DDX6 but not senetaxin (SETX) are epistatic with TOP3B to resolve R-loops

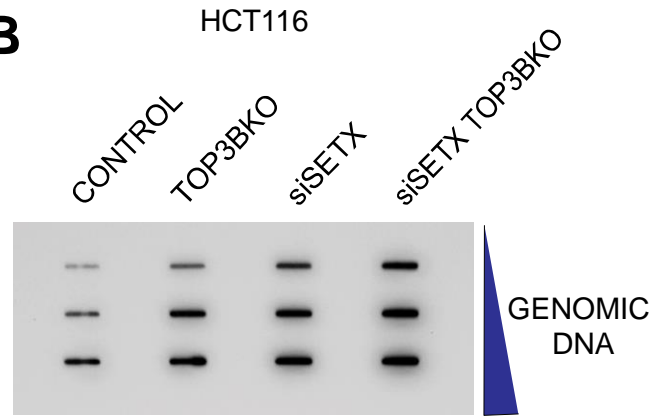
A

Senataxin (SETX)

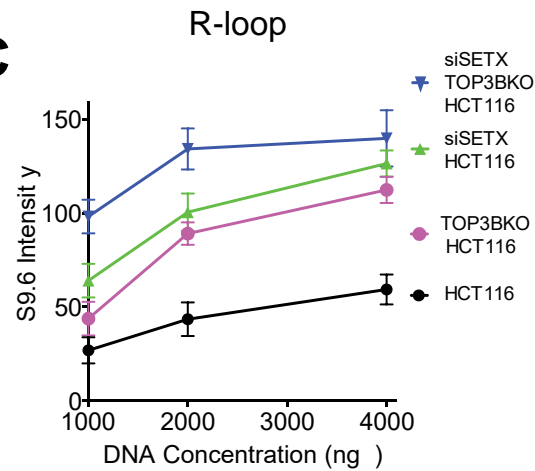


Known R-loop resolving Helicase
(Groh et. al., JMB, 2017)

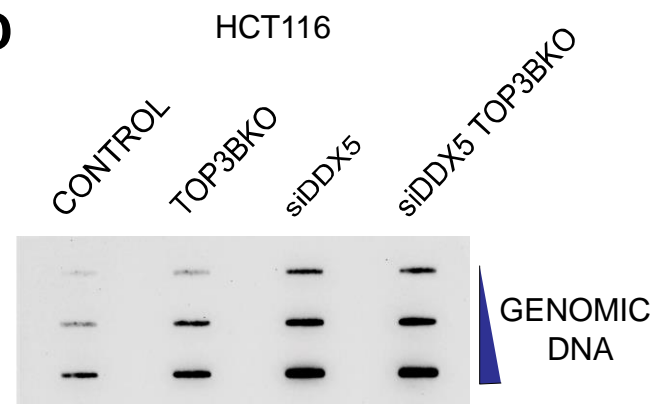
B



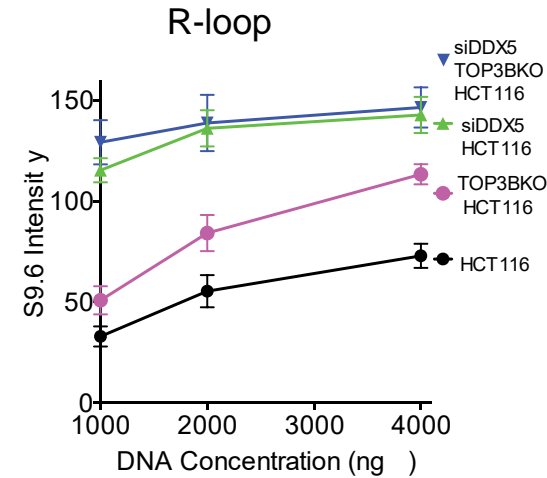
C



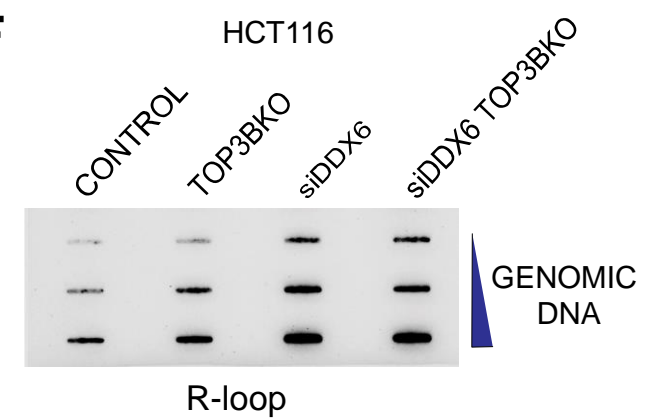
D



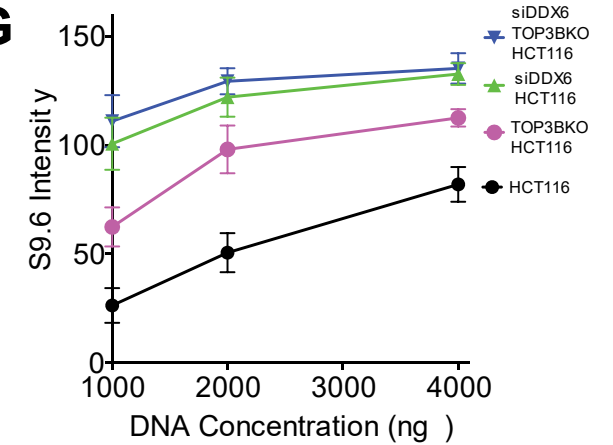
E



F



G



Conclusions

- ❖ TOP3BKO cells have increased R-loops and ectopic expression of TOP3B resolves R-loops
- ❖ TOP3B is recruited to R-loops
- ❖ TOP3B cleaves the single-stranded DNA segment of R-loops by forming TOP3Bcc
- ❖ We propose that TOP3B resolves R-loops in coordination with the DEAD-box helicases DDX5 and DDX6