



**EMC Europe 2025**

Sorbonne University, Paris, France  
September 1<sup>st</sup> - 5<sup>th</sup>, 2025

# SPONSORING PACKAGES & EXHIBITION

## EMC EUROPE 2025

**SEE YOU IN PARIS**



## **A WORLD SYMPOSIUM ON ELECTROMAGNETIC COMPATIBILITY**

The EMC Europe 2025 symposium is an essential meeting place where leading international experts, researchers and engineers will come together to share the latest scientific and technical contributions in the field of electromagnetic compatibility. EMC Europe 2025 is intended to be a forum for exchanges, discussions and in-depth thinking, where collaborations can be forged to meet the many challenges in this field. The program will include plenary talks on major topical issues, technical sessions and exhibition, workshops and tutorials, exploring the frontiers of knowledge, covering a wide range of subjects such as measurement techniques, modelling and the management of electromagnetic risks in a world where electronics is omnipresent and underpins critical and autonomous processes.

EMC Europe 2025 is much more than gathering about a fascinating profession at the crossroads of multiple disciplines. It is also the pleasure of getting together and discovering new faces from all over the world in a friendly atmosphere.

### **CONTACT :**

[emceurope2025@premc.org](mailto:emceurope2025@premc.org)



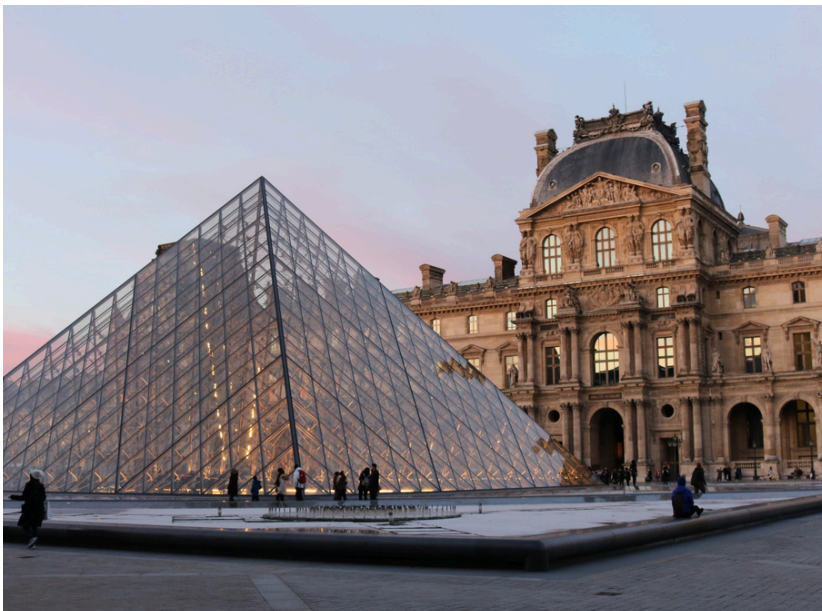
EMC Europe 2025

Sorbonne University, Paris, France  
September 1<sup>st</sup> - 5<sup>th</sup>, 2025

# CITY & VENUE

Paris, the city of light, is one of the most, if not the most, famous capital of the world. Its cultural heritage through the ages is fascinating and includes many unrivalled monuments such as the Sacré-Coeur, Notre Dame de Paris (fully restored by 2025), and, obviously, the Eiffel Tower. It is also renowned worldwide for its numerous museums including the Louvre, Musée d'Orsay, Muséum national d'Histoire naturelle and so many others. Paris is a vibrant, lively city with many typical corners to discover, as well as Parisian bars, cafés and gourmet restaurants.

Sorbonne University, specifically its Pierre and Marie Curie campus, is one of the most prestigious and historic institutions in France. Located in the heart of Paris, this campus is renowned for its excellence in science and medicine. Born from the merger of Pierre and Marie Curie University (UPMC) and Paris-Sorbonne University in 2018, Sorbonne University embodies a tradition of academic innovation and cutting-edge research.





# CHOOSE YOUR PACKAGE

**CONTACT :**[emceurope2025@premc.org](mailto:emceurope2025@premc.org)

<b>PLATINIUM 10 000€</b>	<p>SAME AS GOLD PACKAGE</p> <ul style="list-style-type: none"> <li>• Opening ceremony short introduction speech (&lt; 5 minutes)</li> <li>• 2 additional registration passes (total of 5 passes)</li> <li>• Short video (&lt; 1min) instead of slides in plenary room during breaks between sessions</li> <li>• Industrial forum session (2 slots of 1h30)</li> <li>• Advertising in conference program (full page)</li> <li>• Logo printed on the badge</li> <li>• Advertisement leaflet (max. 10 pages) instead of the flyer</li> </ul> <p>EXTRA 3 500€ : 9 m<sup>2</sup> booth + registration pass</p>
<b>GOLD 7 000€</b>	<p>SAME AS SILVER PACKAGE</p> <ul style="list-style-type: none"> <li>• 1 additional registration pass (total of 3 passes)</li> <li>• Slides in the plenary room during breaks between sessions</li> <li>• Logo on the welcome page of the conference proceedings</li> <li>• Advertising in the conference program (half page)</li> <li>• Advertisement flyer A4</li> </ul> <p>EXTRA 3 500€ : 9 m<sup>2</sup> booth + registration pass</p>
<b>SILVER 4 500€</b>	<ul style="list-style-type: none"> <li>• Your logo and hyperlink on the event website</li> <li>• Your logo on the program book cover, slides opening session, conference sessions and final programme &amp; proceedings (USB stick)</li> <li>• E-mailing advertising (logo in the practical email sent to all participants)</li> <li>• Your logo on the registration desk roll up banner</li> <li>• 2 registration passes</li> </ul> <p>EXTRA 3 500€ : 9 m<sup>2</sup> booth + registration pass</p>
<b>EXHIBITOR 3 500€</b>	<ul style="list-style-type: none"> <li>• Your logo on the program book cover</li> <li>• 1 registration pass</li> <li>• 9 m<sup>2</sup> booth</li> </ul>

For exhibitors on site, please note that set-up can start by Monday afternoon and dismantling should be completed by Thursday evening at the latest.

## ADD SOME EXTRAS

**WELCOME RECEPTION  
2 000€**

Sponsoring of the Welcome Reception

(Roll-up banner, flyers and naming the activity according to the company name)

**CONFERENCE DINNER  
3 000€**

Sponsoring of the Conference Dinner

(Roll-up banner, flyers and naming the activity according to the company name)

**COFFEE BREAK  
1 000€**

Sponsoring of a coffee break (for one half day)

(Roll-up banner, flyers and naming the activity according to the company name)

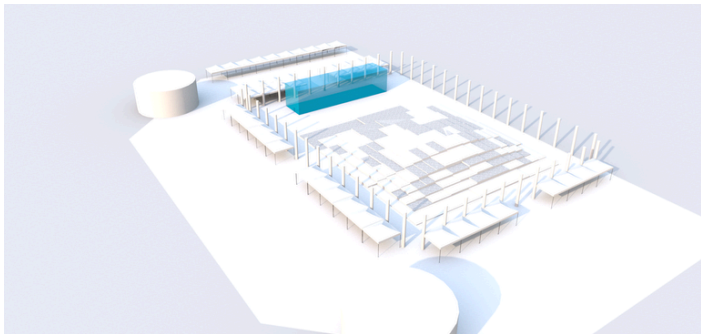
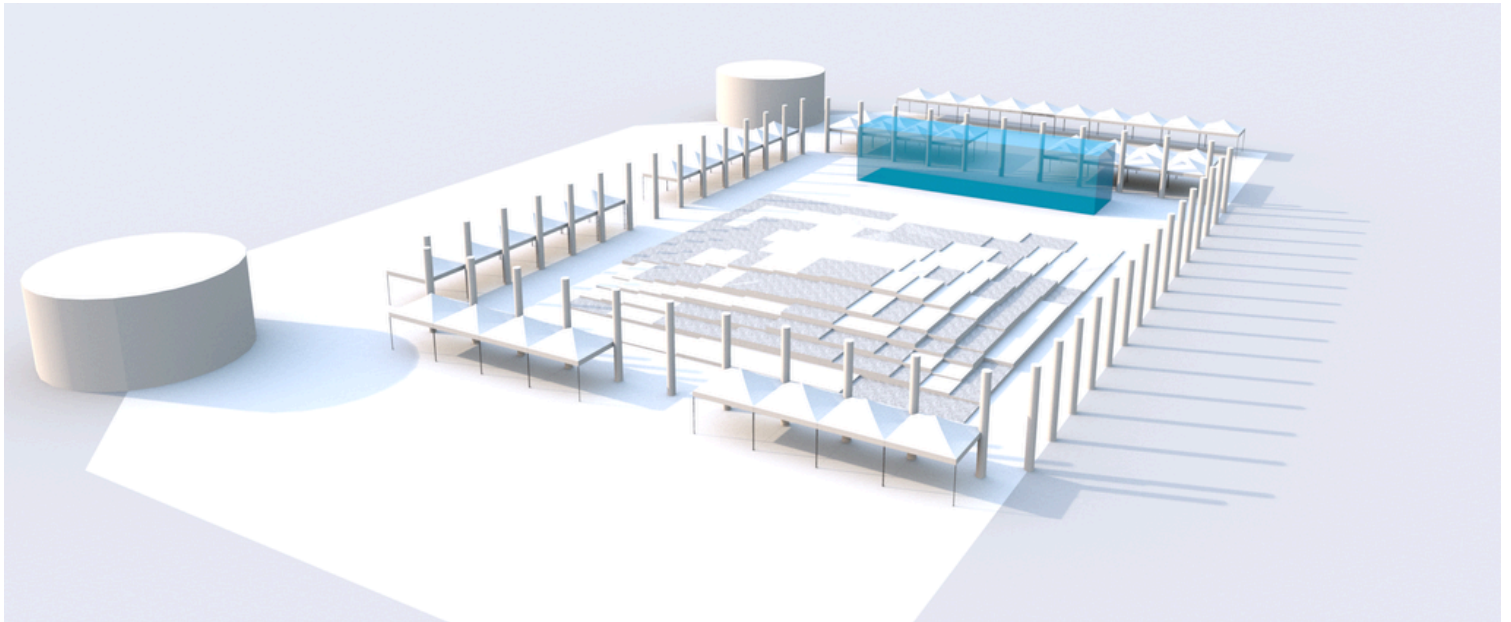
**INDUSTRIAL FORUM SESSION  
1 500€**

Industrial forum session (1h30)

Only available for Gold package



# LAYOUT PLAN



We are pleased to offer a fully equipped booth that provides everything you need to showcase your products and services in a professional and engaging environment. Each booth rental includes the following:

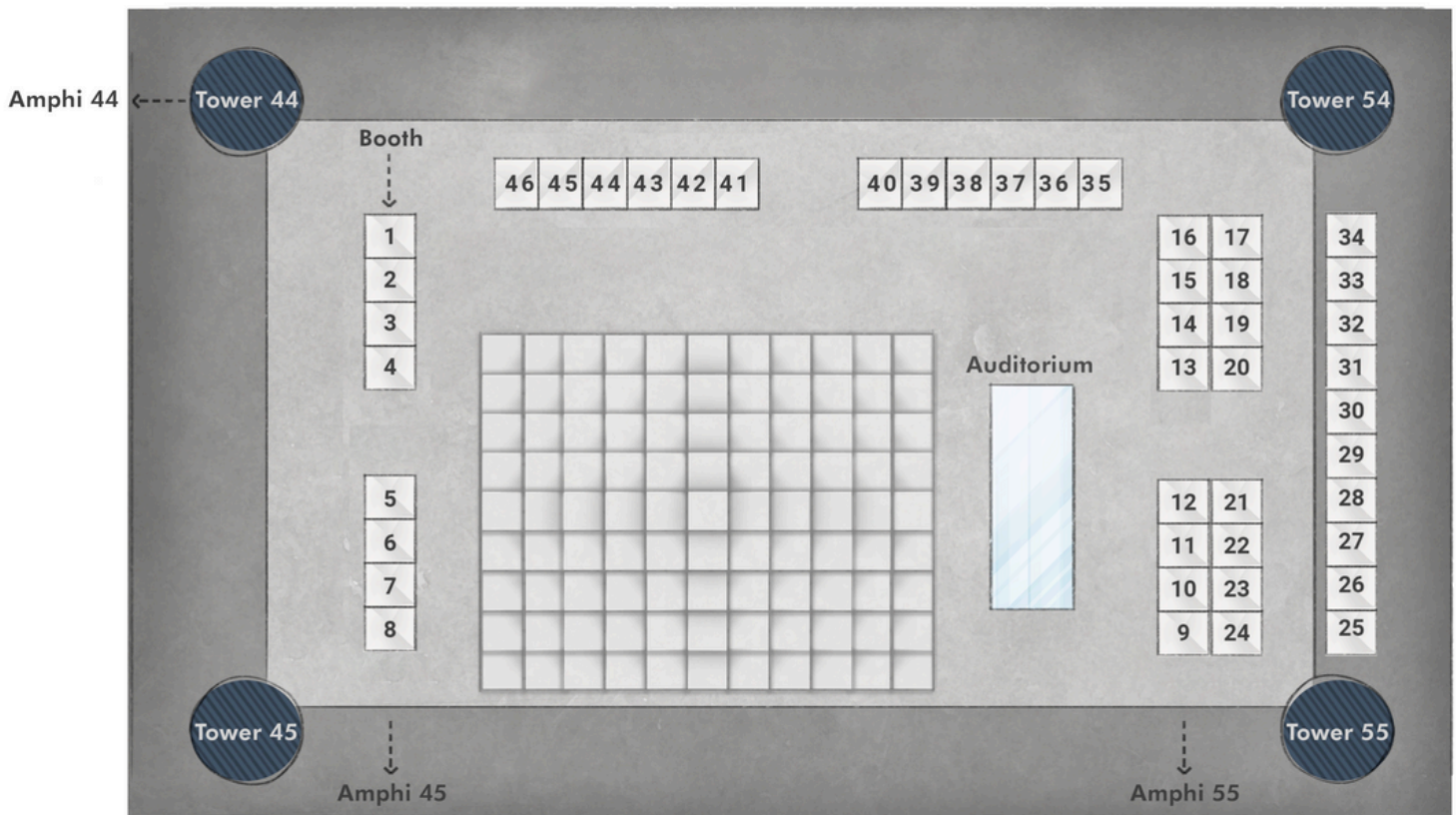
- **Exhibition Table:** A spacious 220 cm x 70 cm table covered with a premium brushed cotton tablecloth, offering ample space for your materials and displays.
- **Seating:** Two chairs are provided to ensure comfort during your interactions with attendees.
- **Electricity Supply:** A dedicated power outlet to support any electrical equipment or displays you wish to feature at your stand.
- **Lighting:** Internal booth lighting to ensure your products and materials are clearly visible and attractively showcased.





# LAYOUT PLAN

## EXHIBITOR BOOTH PLAN EMC EUROPE 2025





EMC Europe 2025

Sorbonne University, Paris, France  
September 1<sup>st</sup> - 5<sup>th</sup>, 2025

# PREVIOUS EMC EUROPE SPONSORS

